

Little Lick Creek Watershed Plan

Technical Team Meeting 7
Wednesday, November 9, 2005

Agenda

2:00 Welcome & Announcements

2:15 Prioritizing Restoration Projects*

Floating Break

3:30 Watershed Management Strategies*

4:00 Adjourn

* Decision Item

Announcements?

Prioritizing Restoration Projects

Restoration

1. Stream repair
2. Buffer Restoration
3. Stormwater Retrofits
4. Wetlands Restoration
5. Homeowner education
6. Inspection and enforcement
7. Maintenance
8. Trash clean-up
9. Hotspots

*Do not rank project types 4-9. Provide list with recommendations to Durham City and County.

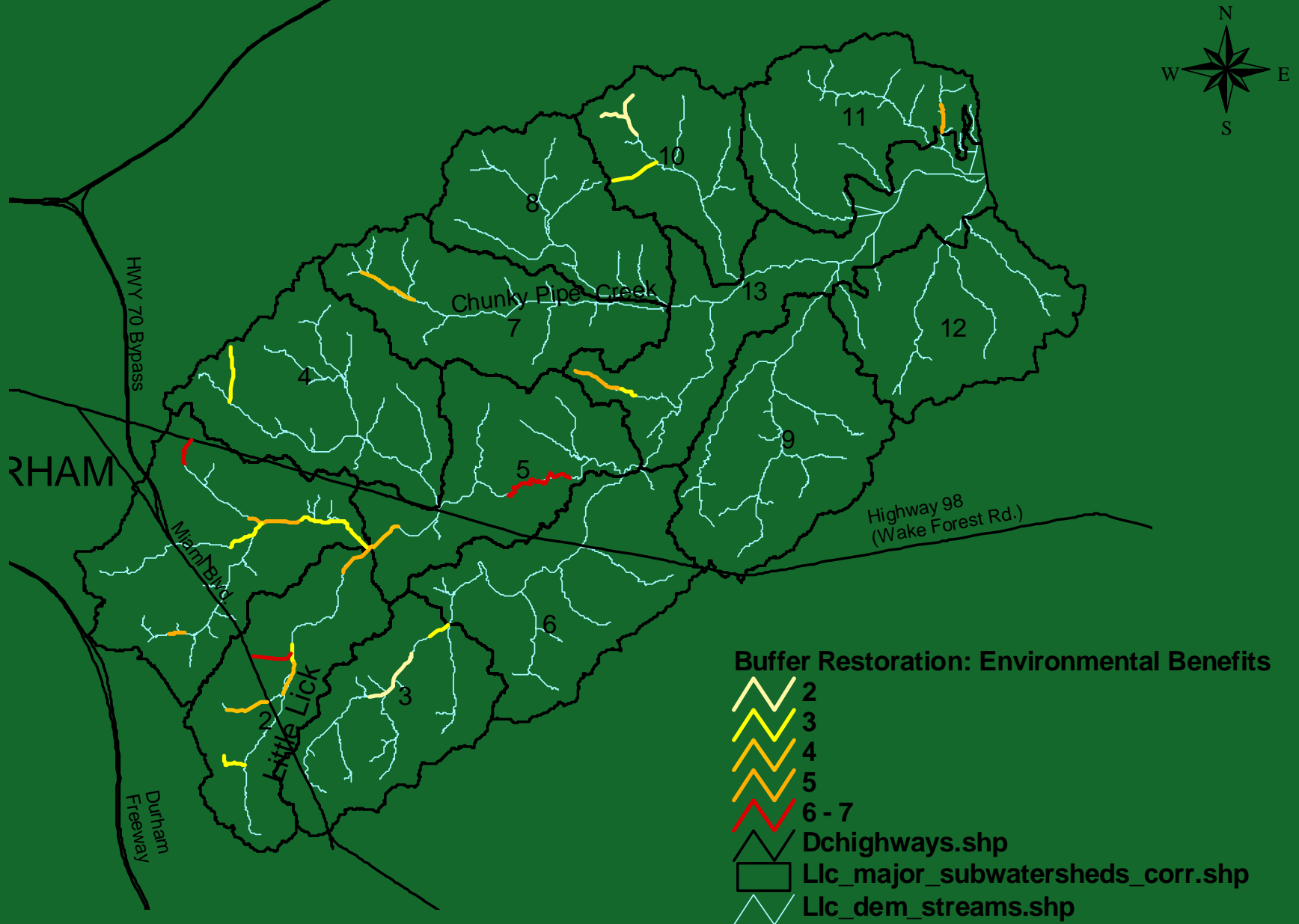
Restoration Prioritization

In August: LLC Tech Team decided on general approach and relative weightings

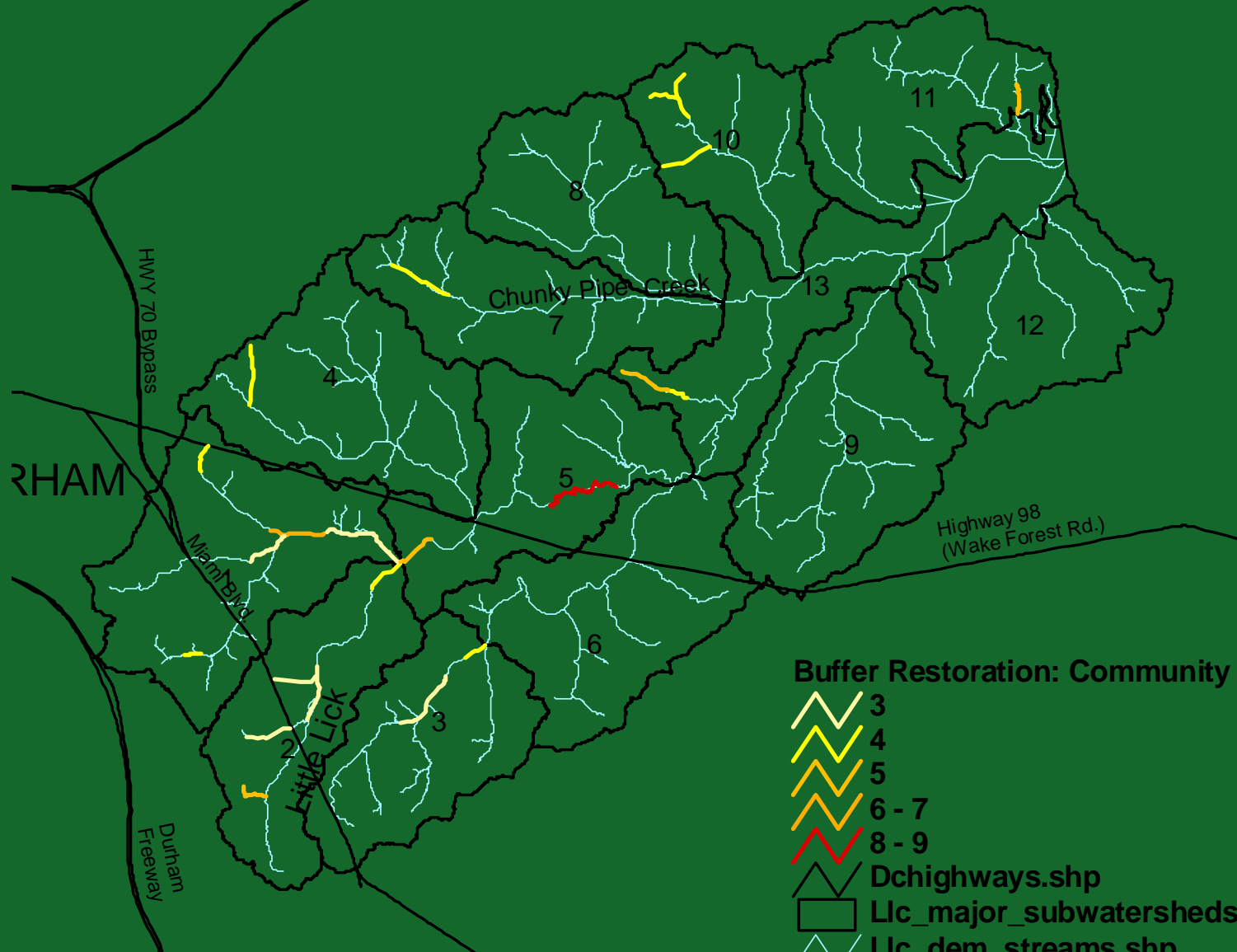
- Stream restoration
- Buffer restoration
- Stormwater retrofits

Buffer Restoration Priorities

Buffers: Environmental Benefits



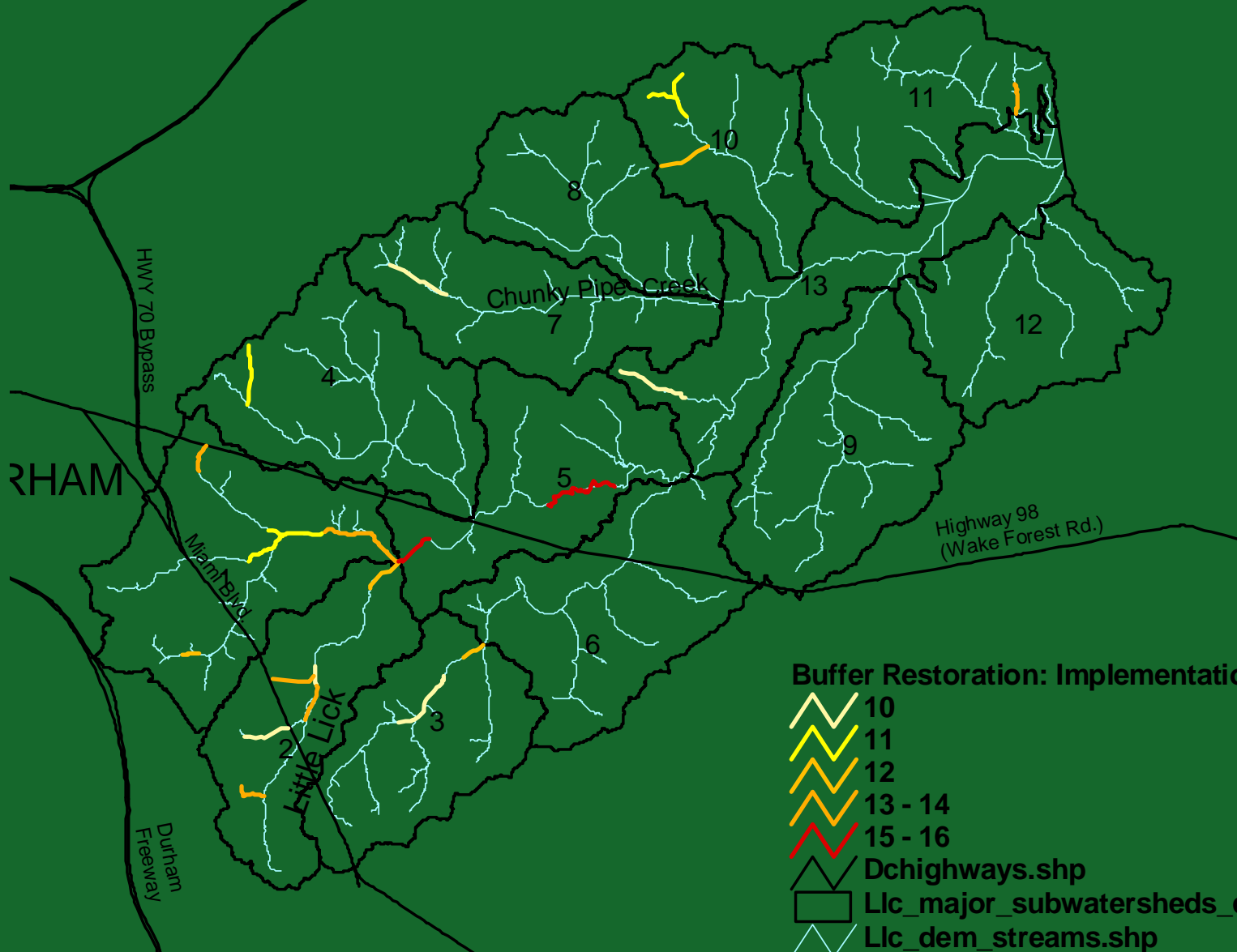
Buffers: Community Support



Buffer Restoration: Community Support

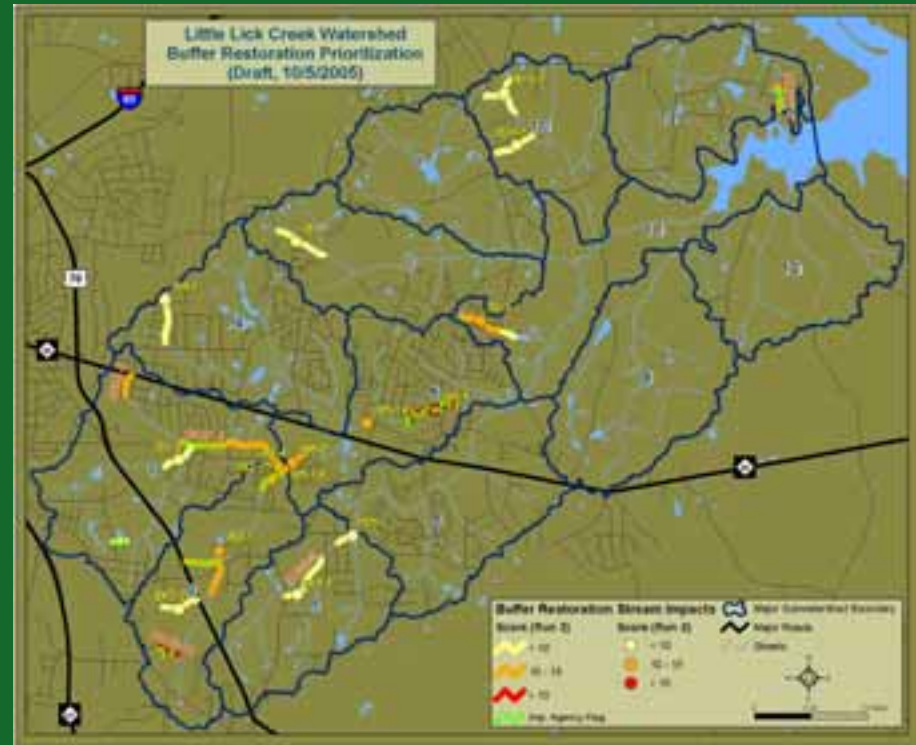
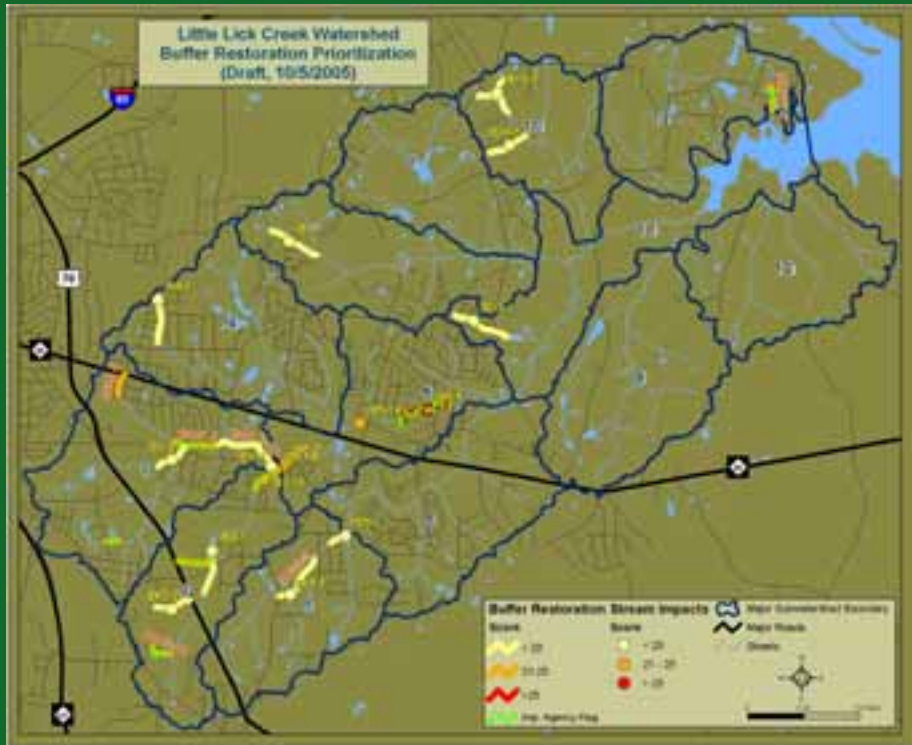
- 3
- 4
- 5
- 6 - 7
- 8 - 9
- Dchighways.shp
- Llc_major_subwatersheds_corr.shp
- Llc_dem_streams.shp

Buffers: Feasibility

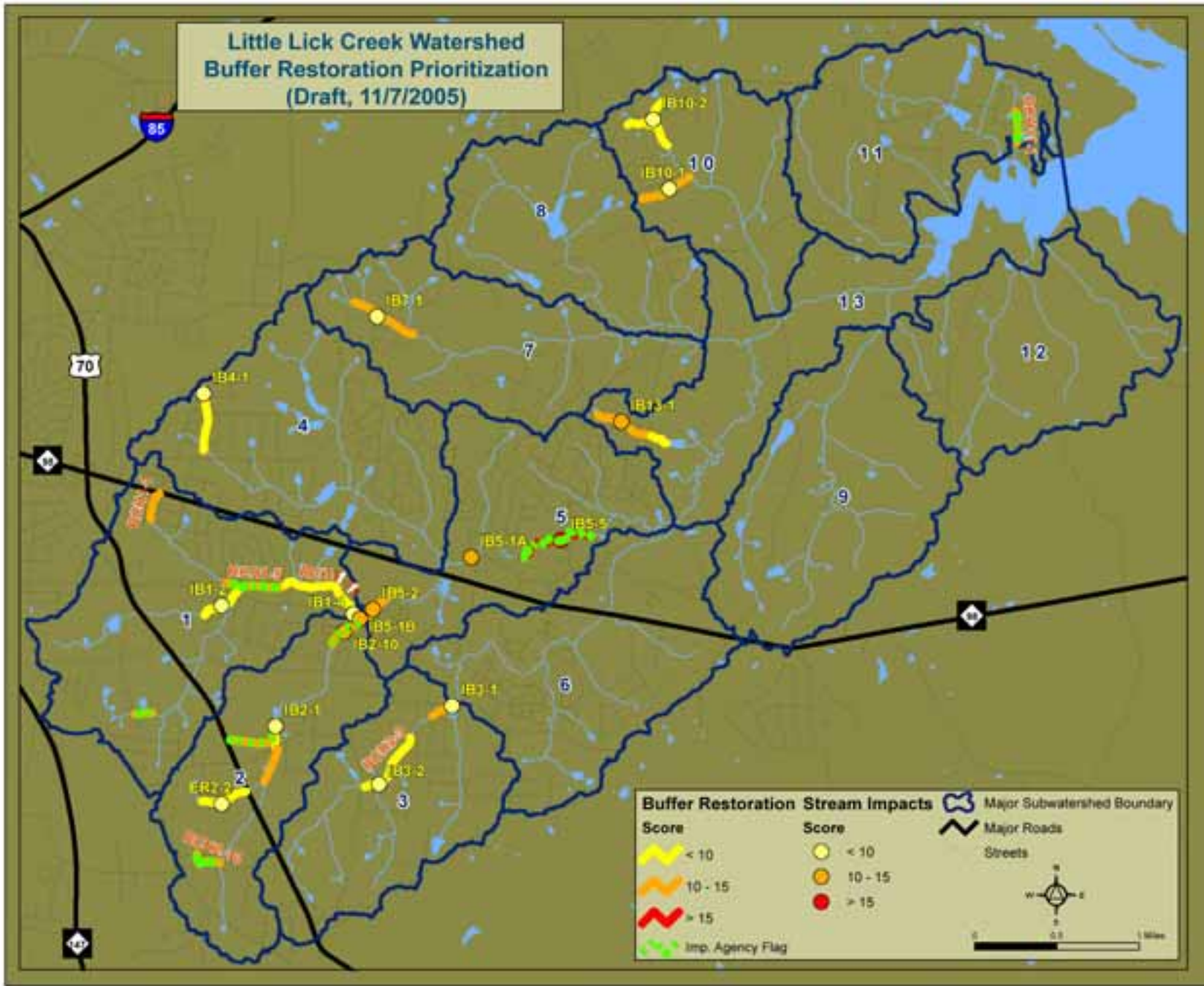


Run 1

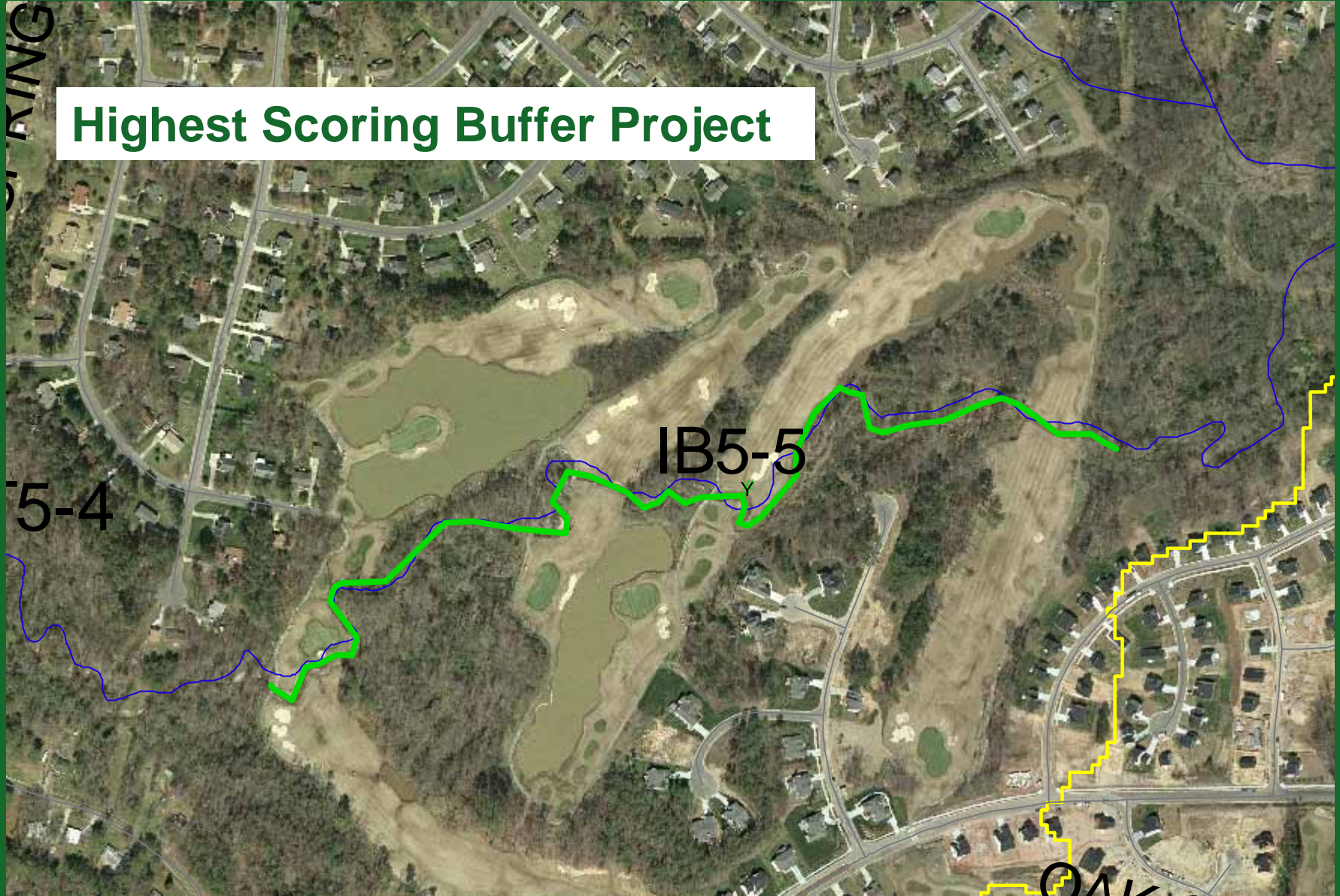
Run 2



Little Lick Creek Watershed
 Buffer Restoration Prioritization
 (Draft, 11/7/2005)



Highest Scoring Buffer Project



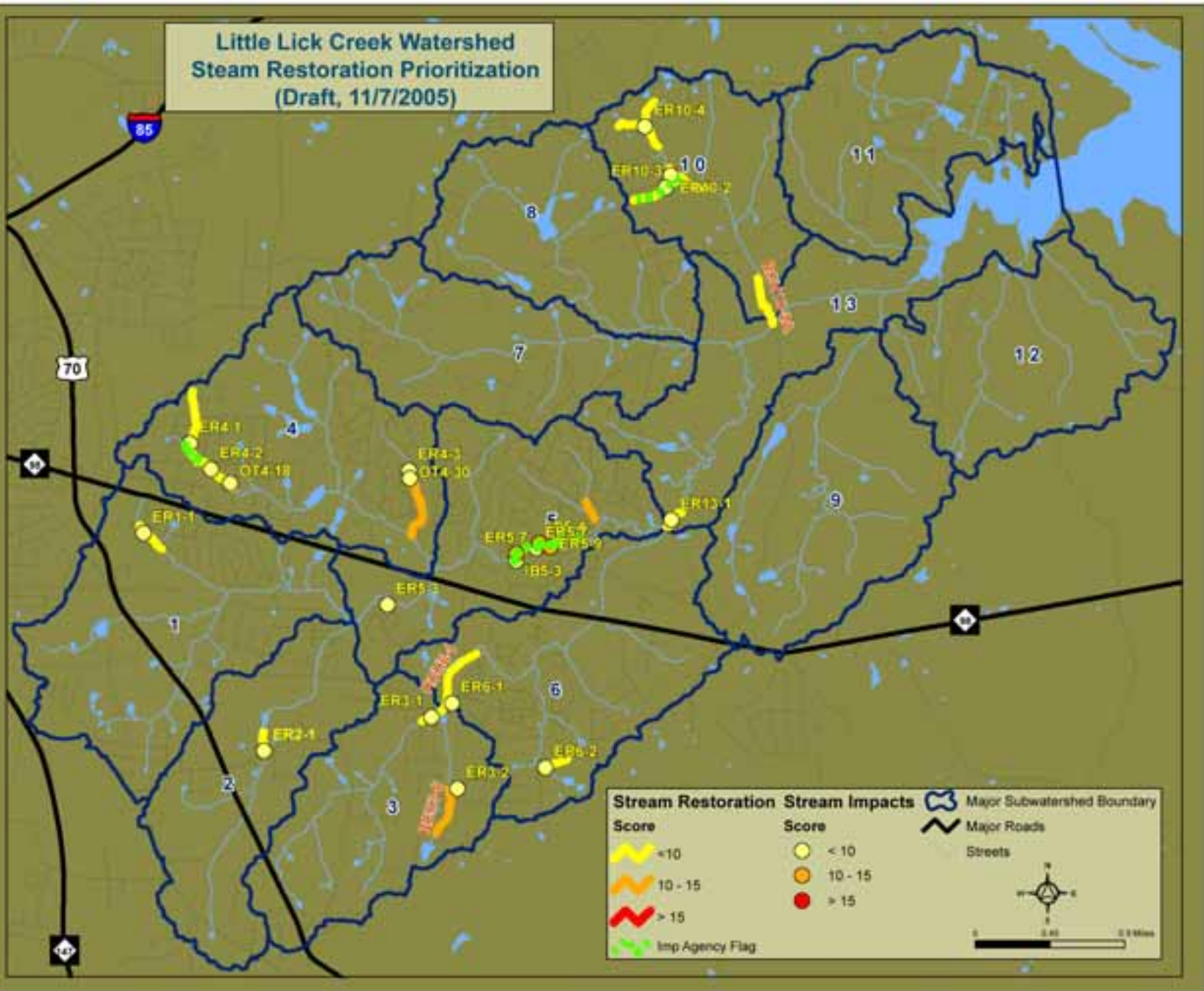
IB5-5

5-4

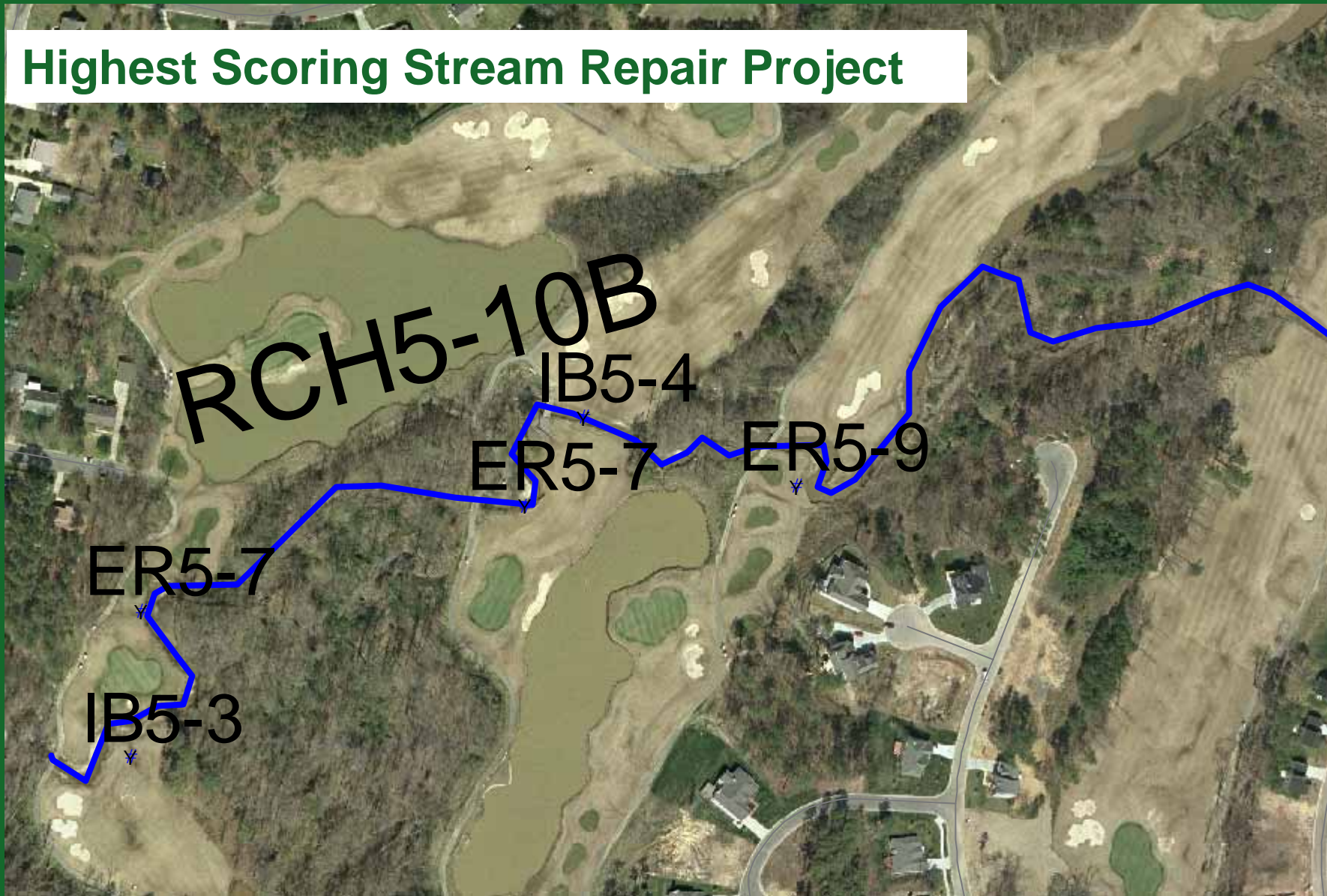
OAK

Stream Repair Priorities

Little Lick Creek Watershed
 Stream Restoration Prioritization
 (Draft, 11/7/2005)

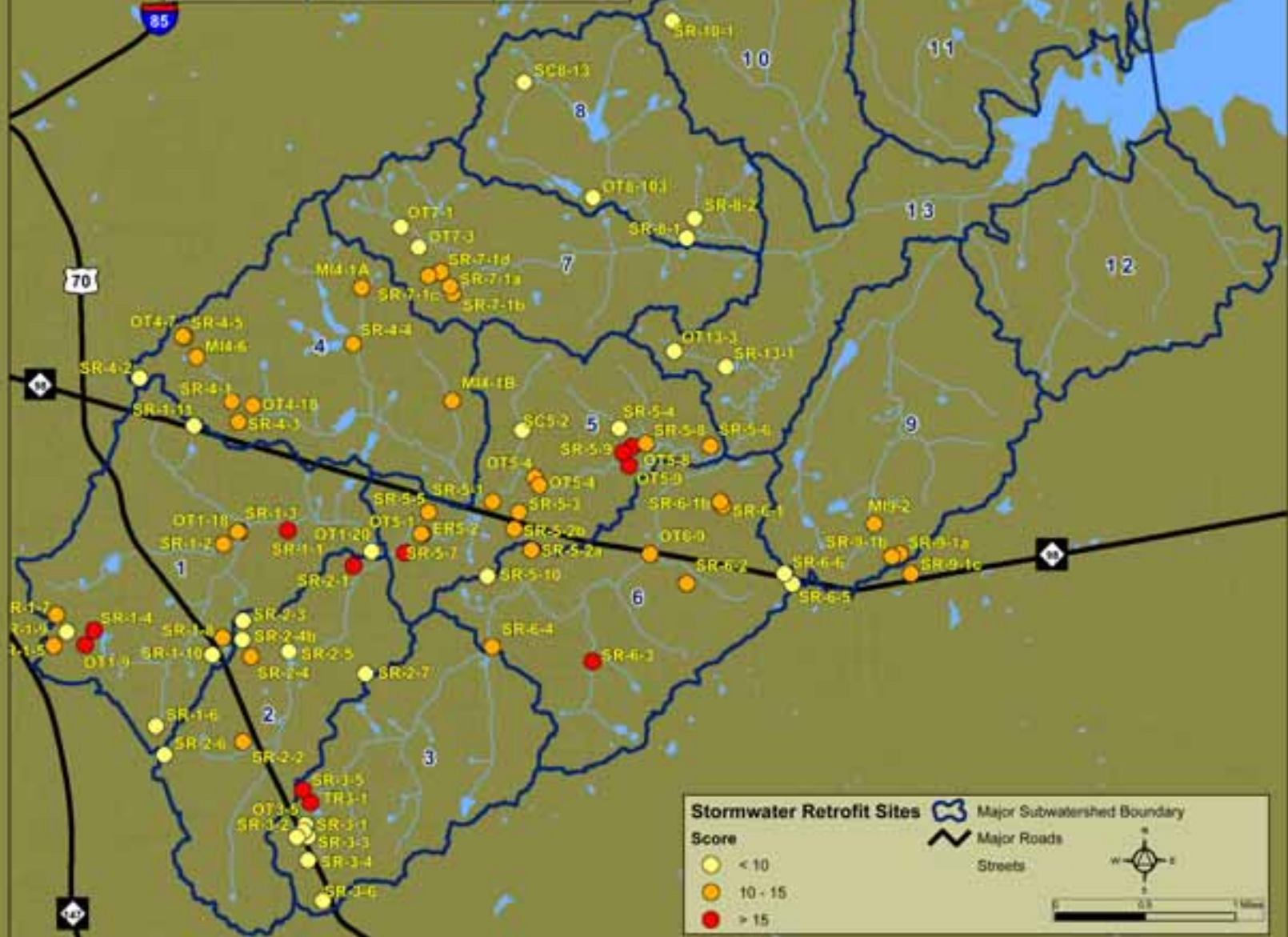


Highest Scoring Stream Repair Project



Stormwater Retrofit Priorities

Little Lick Creek Watershed
 Stormwater Retrofit Site Prioritization
 (Draft, 11/7/2005)



Stormwater Retrofit Sites

Major Subwatershed Boundary

Major Roads

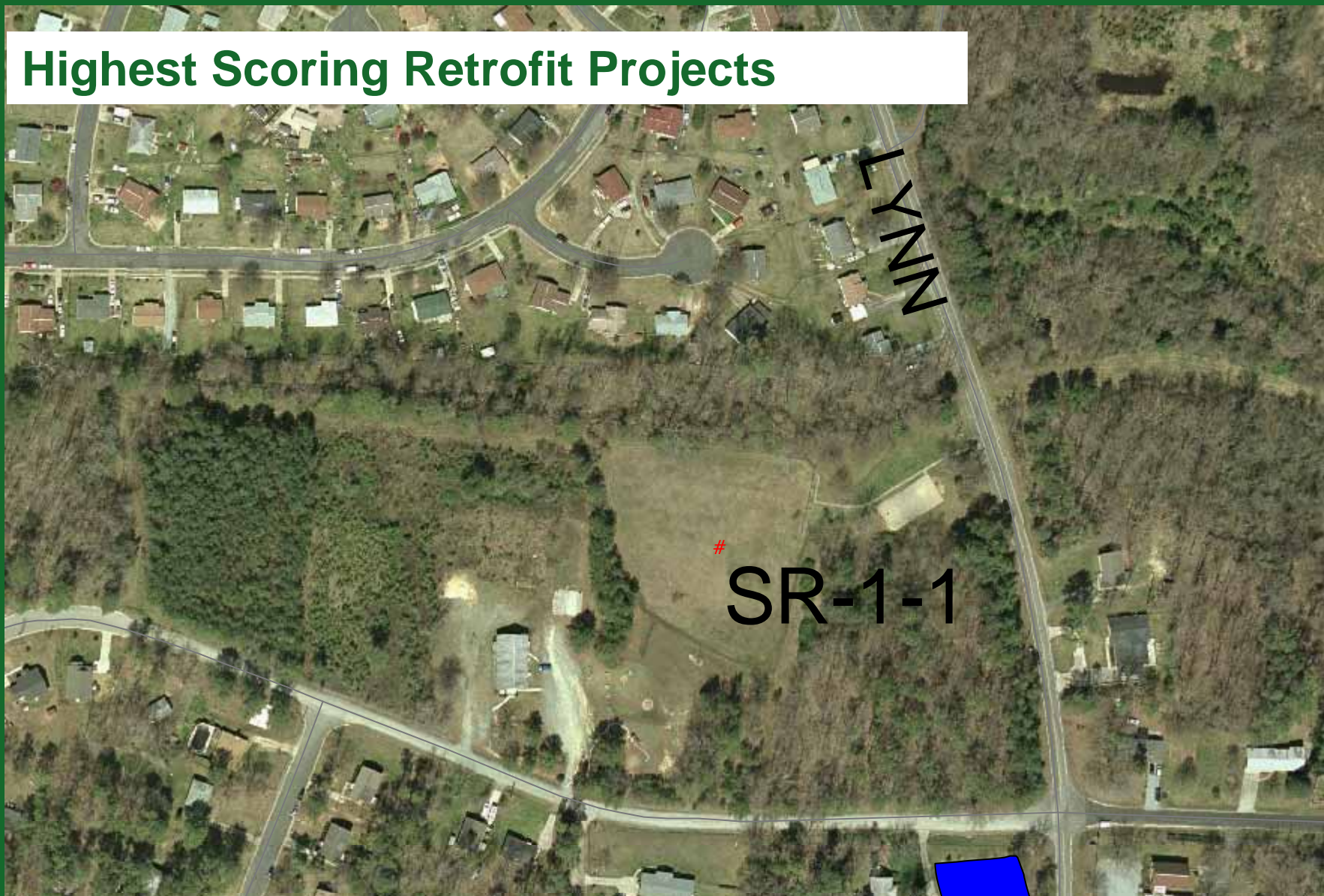
Streets

Score

- < 10
- 10 - 15
- > 15

Scale: 0.5 Miles

Highest Scoring Retrofit Projects



LYNN

SR-1-1

Highest Scoring Retrofit Projects



Combining Restoration Priorities

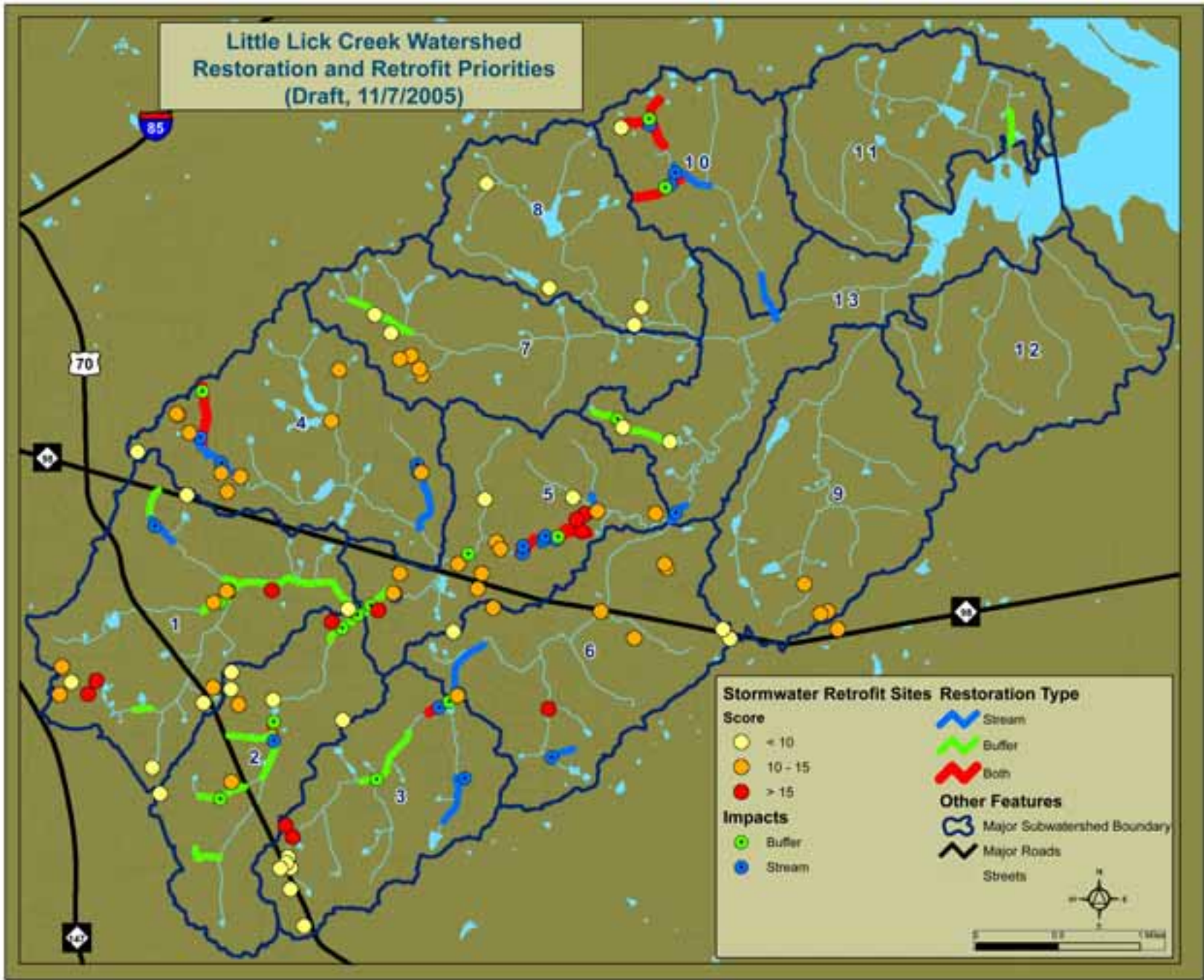
Subwatershed Assessment Committee

Discussed subwatershed-level need for
management:

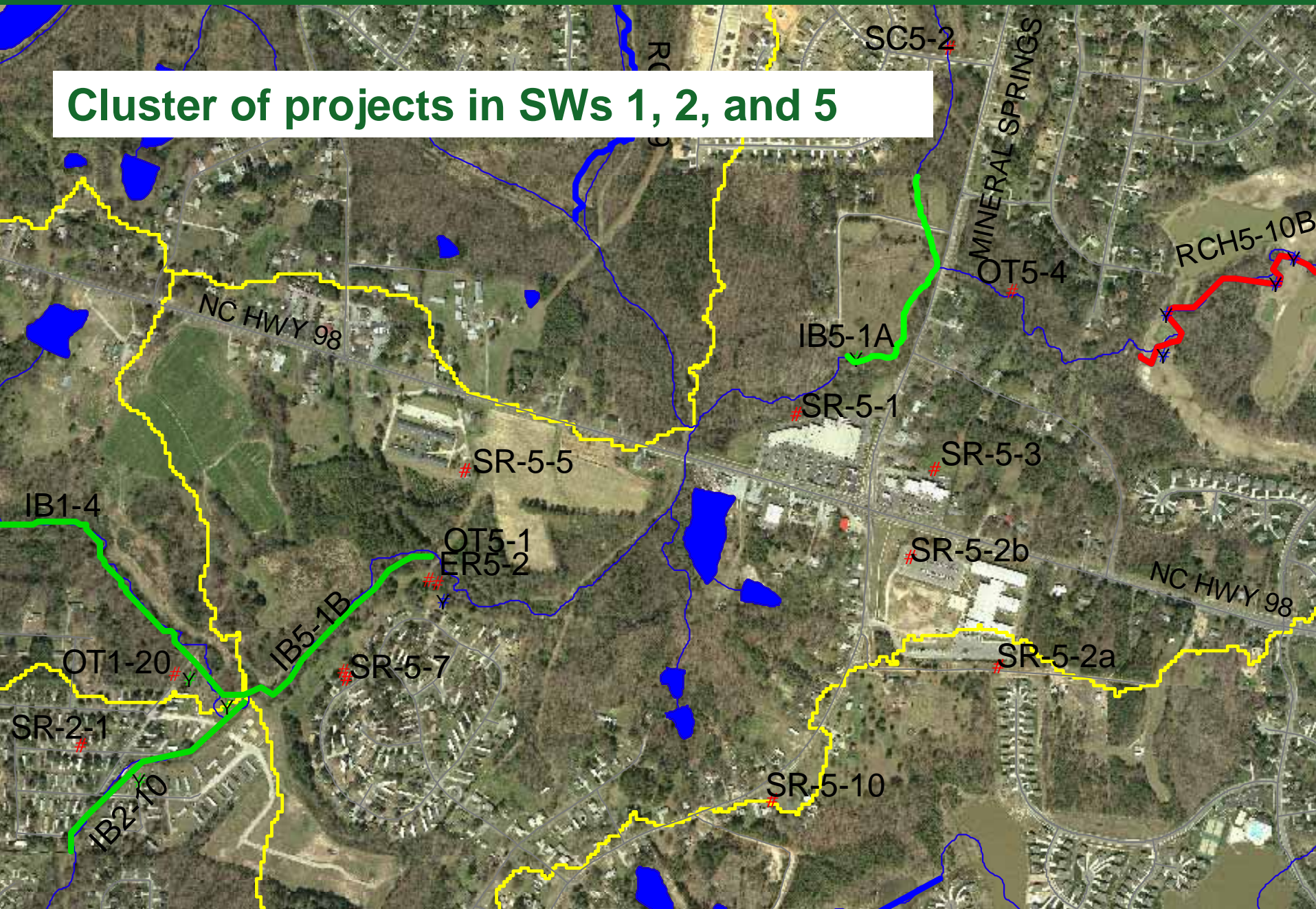
- Stream and Buffer Restoration
- Stormwater Retrofit
- Land Protection

***Conclusion: look for “clusters” of
restoration opportunities***

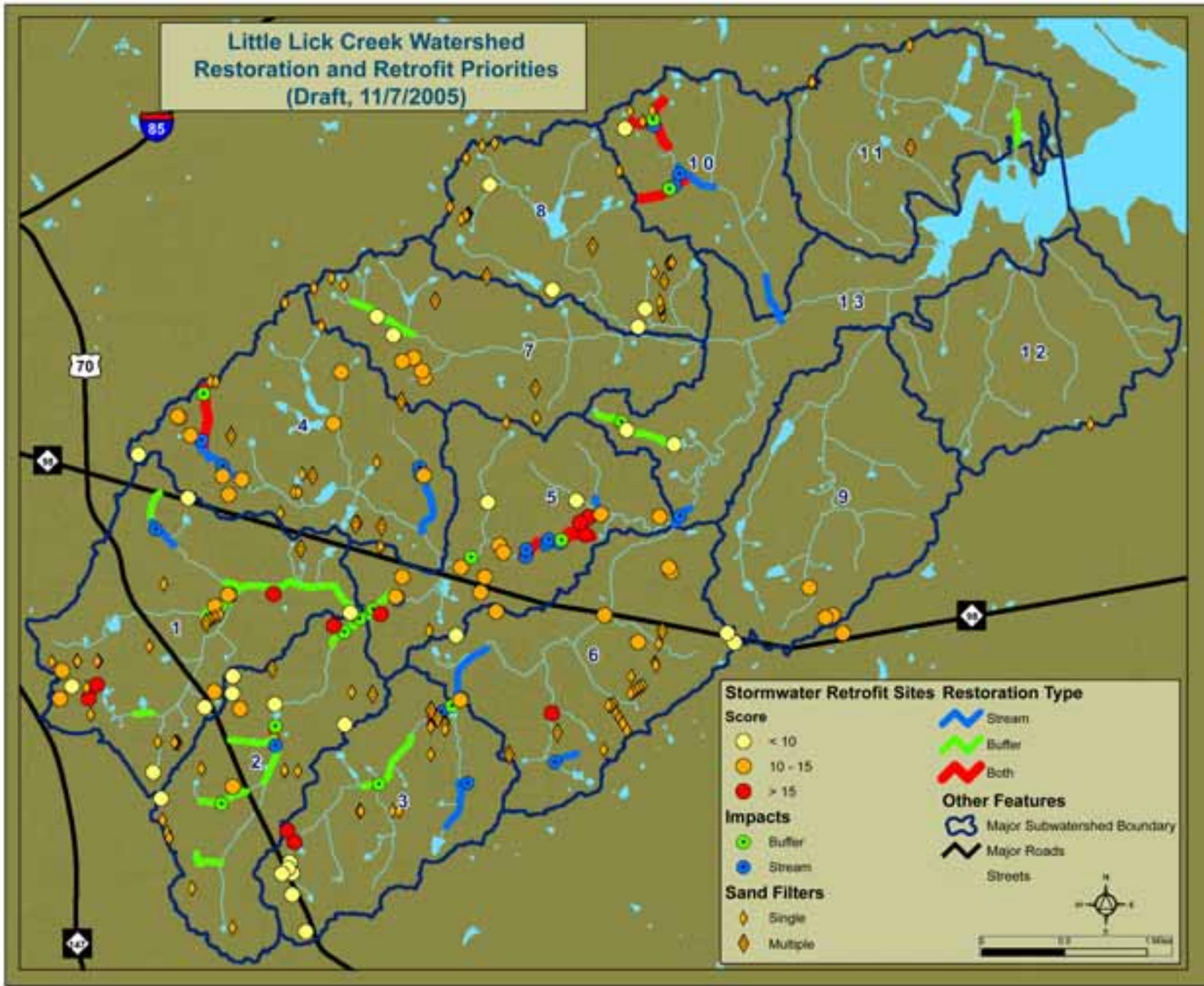
Little Lick Creek Watershed
 Restoration and Retrofit Priorities
 (Draft, 11/7/2005)



Cluster of projects in SWs 1, 2, and 5



Little Lick Creek Watershed
 Restoration and Retrofit Priorities
 (Draft, 11/7/2005)



Cluster of projects in SW 3

HOLDER

RCH6-1

ER6-1

IB3-1

SR-6-4

RCH3-1

ER3-1

RCH3-3

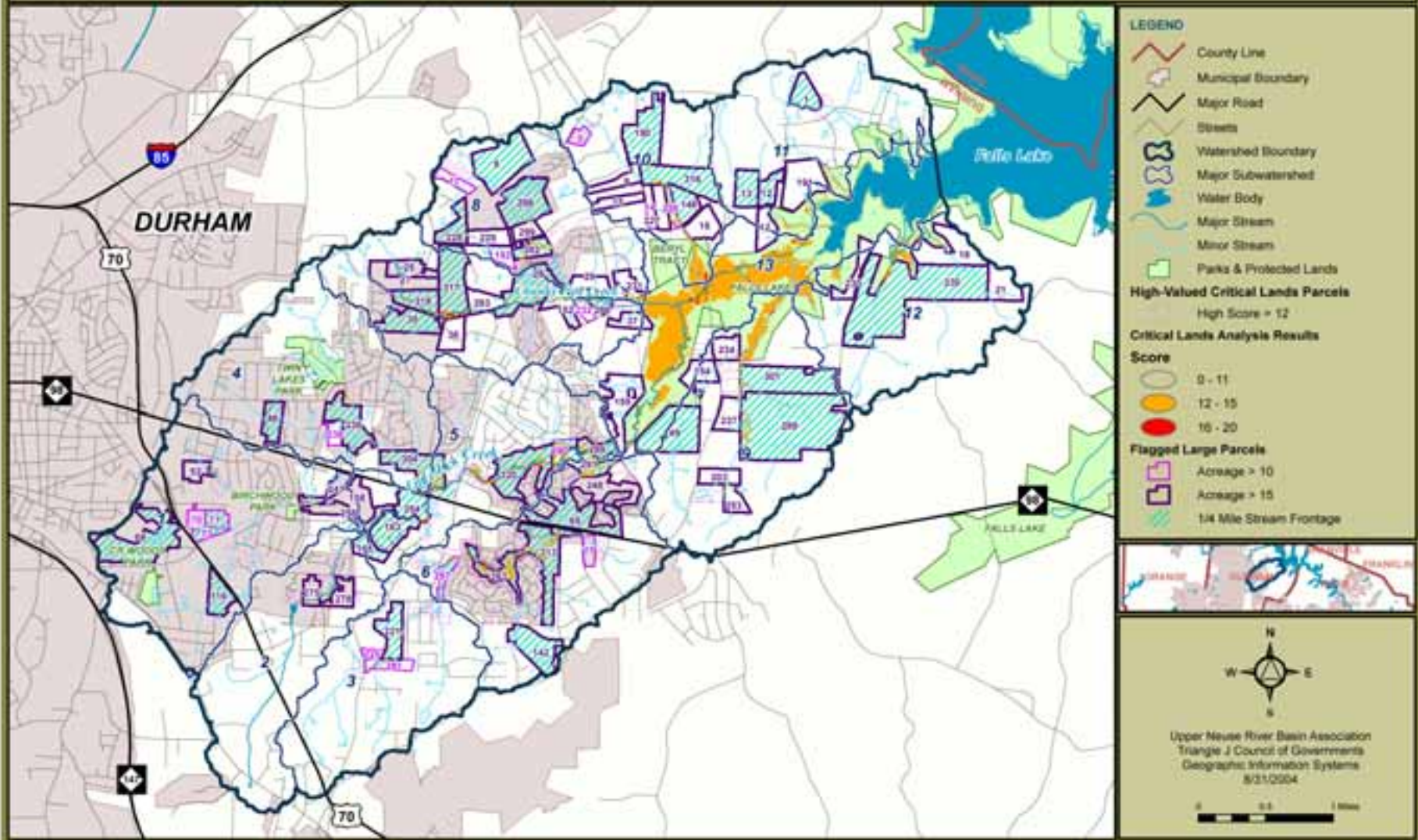
IB3-2

RCH3

ER3-2



Little Lick Creek Watershed Critical Lands Analysis



LEGEND

- County Line
- Municipal Boundary
- Major Road
- Streets
- Watershed Boundary
- Major Subwatershed
- Water Body
- Major Stream
- Minor Stream
- Parks & Protected Lands

High-Valued Critical Lands Parcels
High Score = 12

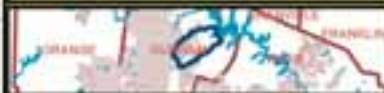
Critical Lands Analysis Results

Score

- 0 - 11
- 12 - 15
- 16 - 20

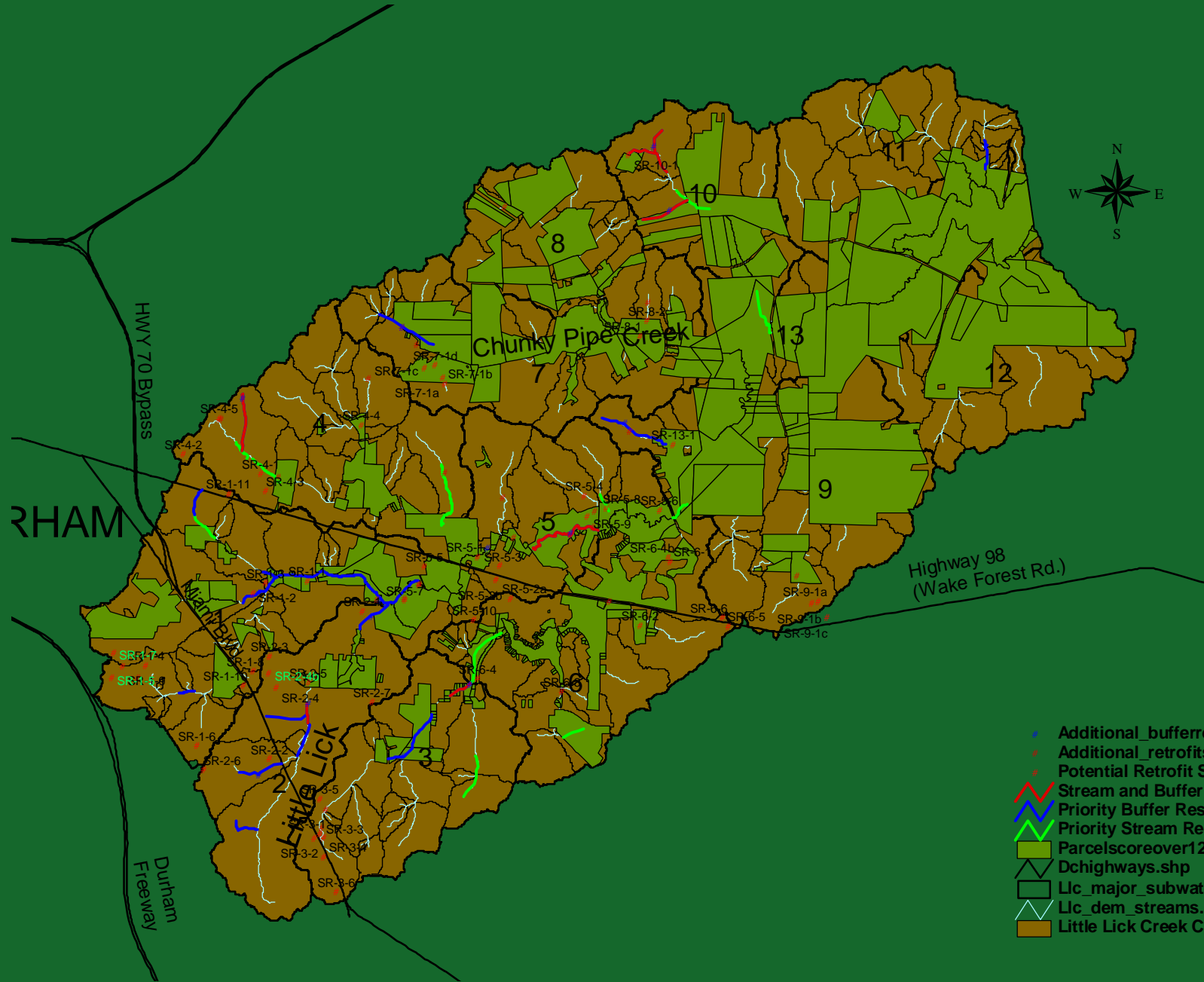
Flagged Large Parcels

- Acres > 10
- Acres > 15
- 1/4 Mile Stream Frontage

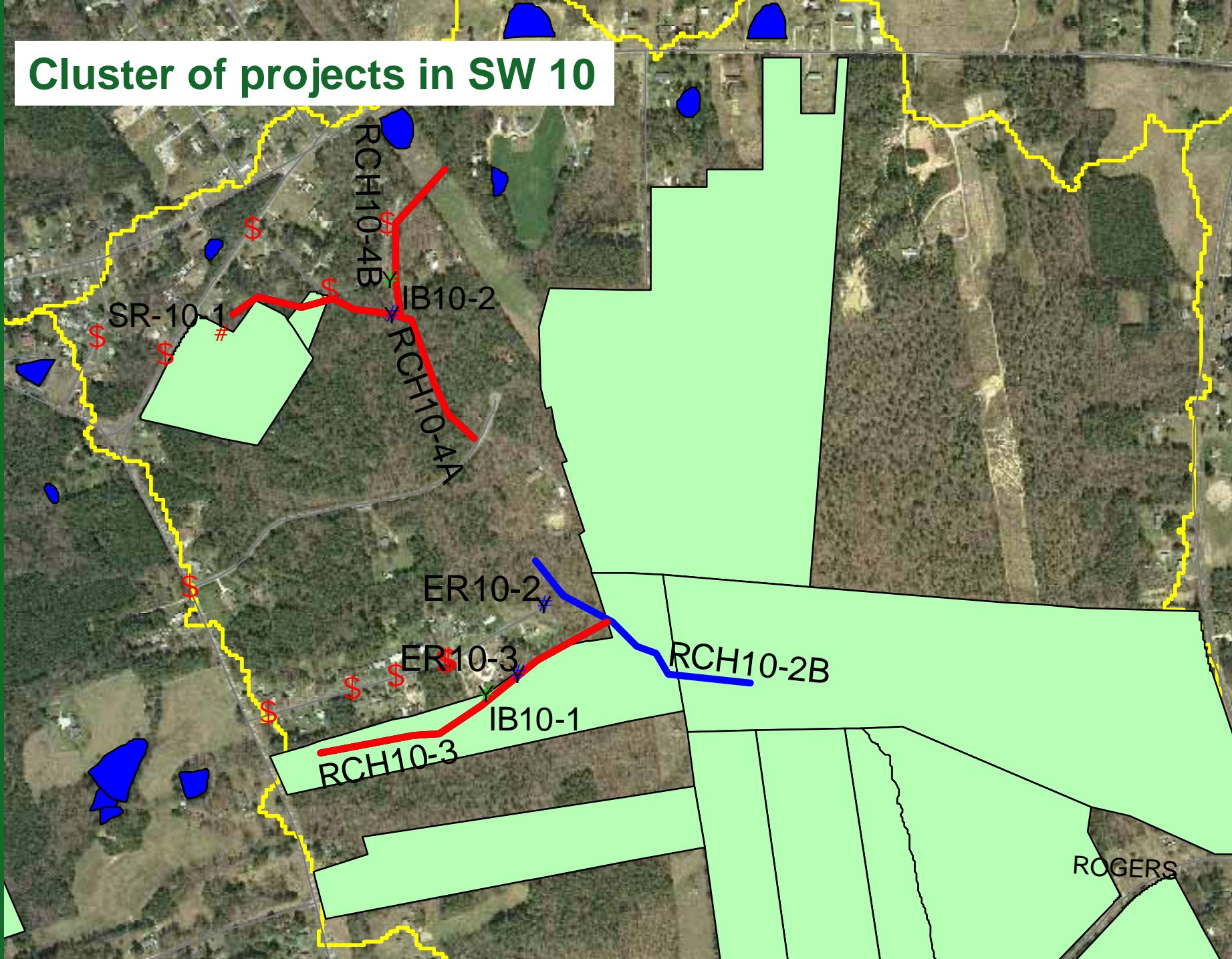


Map Orientation and Scale

Upper Neuse River Basin Association
Triangle J Council of Governments
Geographic Information Systems
8/31/2004



Cluster of projects in SW 10



Next Steps

- *Technical Memorandum #4: Priorities for watershed restoration projects in Little Lick Creek*

***Little Lick Creek
Management Strategies***

Comprehensive Watershed Management

A management approach that addresses existing impairment and attempts to prevent future degradation through multiple strategies.

Little Lick Creek Management Categories

1. Watershed Restoration Strategies
2. Strategies to Prevent Future Watershed Degradation
3. Strengthening Watershed Stewardship

Watershed Restoration Strategies

1. Stream repair projects
2. Buffer restoration projects
3. Stormwater retrofit projects
4. “Hot Spots” detection & elimination
(including sand filter WWT systems)

Strategies to Prevent Future Degradation

1. Critical lands protection (includes acquisition, easements, ordinance changes recs.)
2. Better site design
3. Erosion and sediment control recommendations

Strengthening Watershed Stewardship

1. Improved enforcement of existing rules
2. Watershed outreach and education
3. Adopt-A-Stream programs
4. Stream monitoring

Up Next...

Technical Team: Wednesday, December 14
at Rollingview Community Center

Community Meeting: January