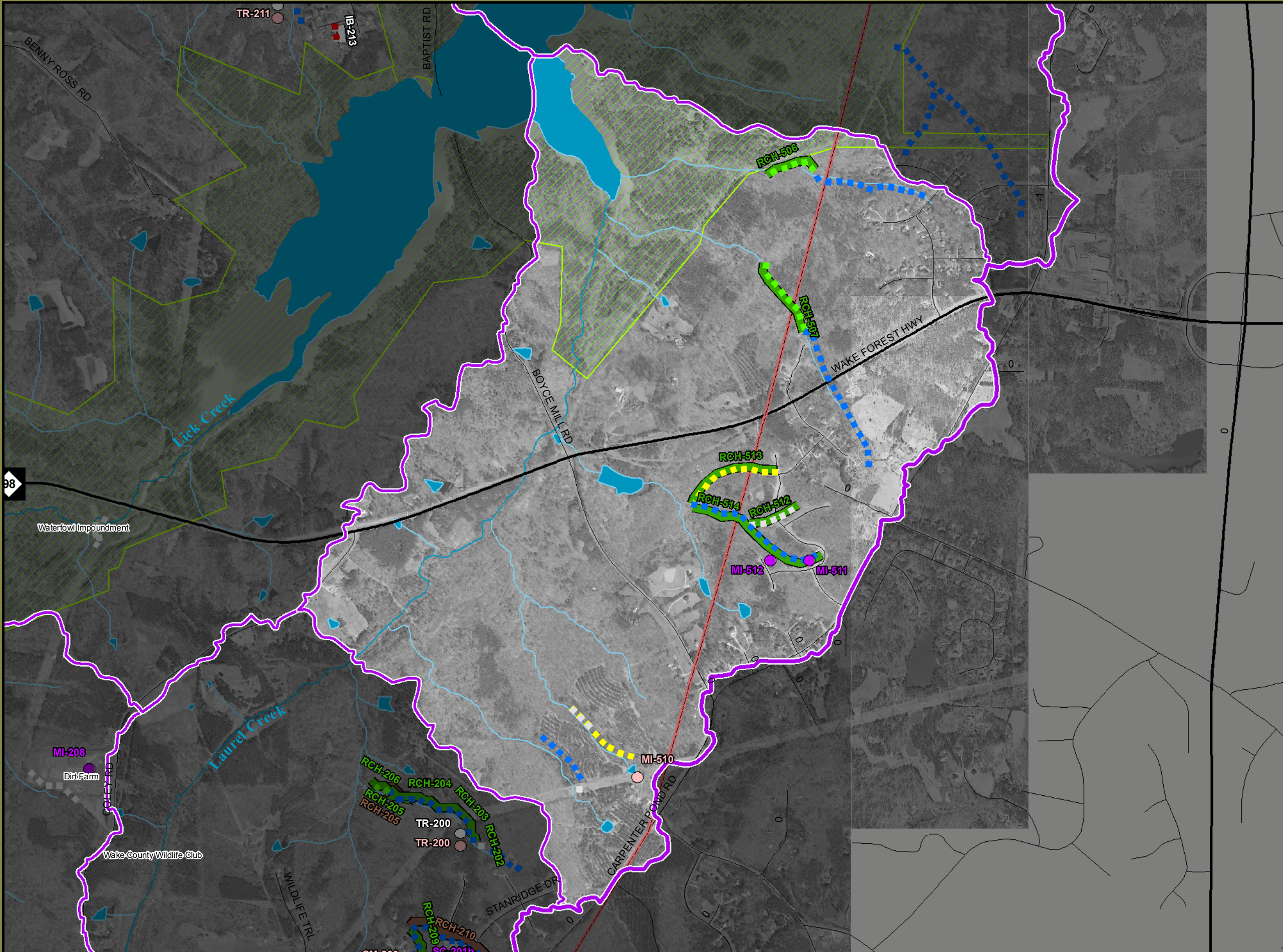


# Lick Creek Stream Conditions & Impacts: Subwatershed 10



**LEGEND**

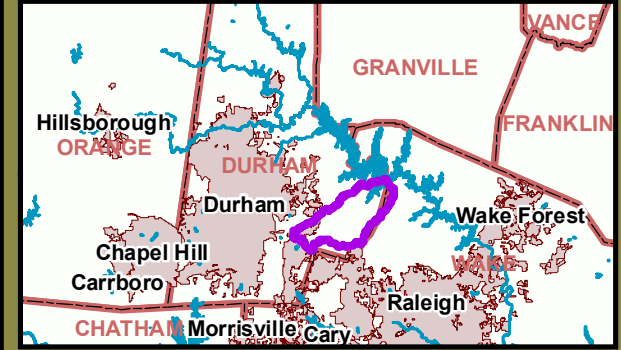
|                  |                       |
|------------------|-----------------------|
| County Line      | Lick Creek Study Area |
| City Limit       | Watershed             |
| Major Road       | Subwatershed          |
| Street           | <b>Surface Water</b>  |
| Parks/Open Space | Water Body            |
|                  | Major Stream          |
|                  | Minor Stream          |

**Project Type**

|  |                        |
|--|------------------------|
|  | Major Restoration      |
|  | Volunteer Restoration  |
|  | Enforcement            |
|  | Repair                 |
|  | Protection             |
|  | Diabase                |
|  | Outreach and Education |
|  | Allowed Impacts        |

**Reach Conditions**

|  |            |
|--|------------|
|  | Not Scored |
|  | Poor       |
|  | Fair       |
|  | Good       |
|  | Excellent  |



Upper Neuse River Basin Association  
Triangle J Council of Governments  
Geographic Information Systems  
6/2007

0 0.25 0.5 Miles